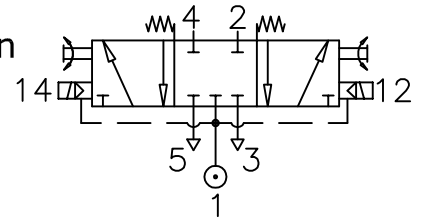


Spring Centralised Solenoid Pilot Actuated

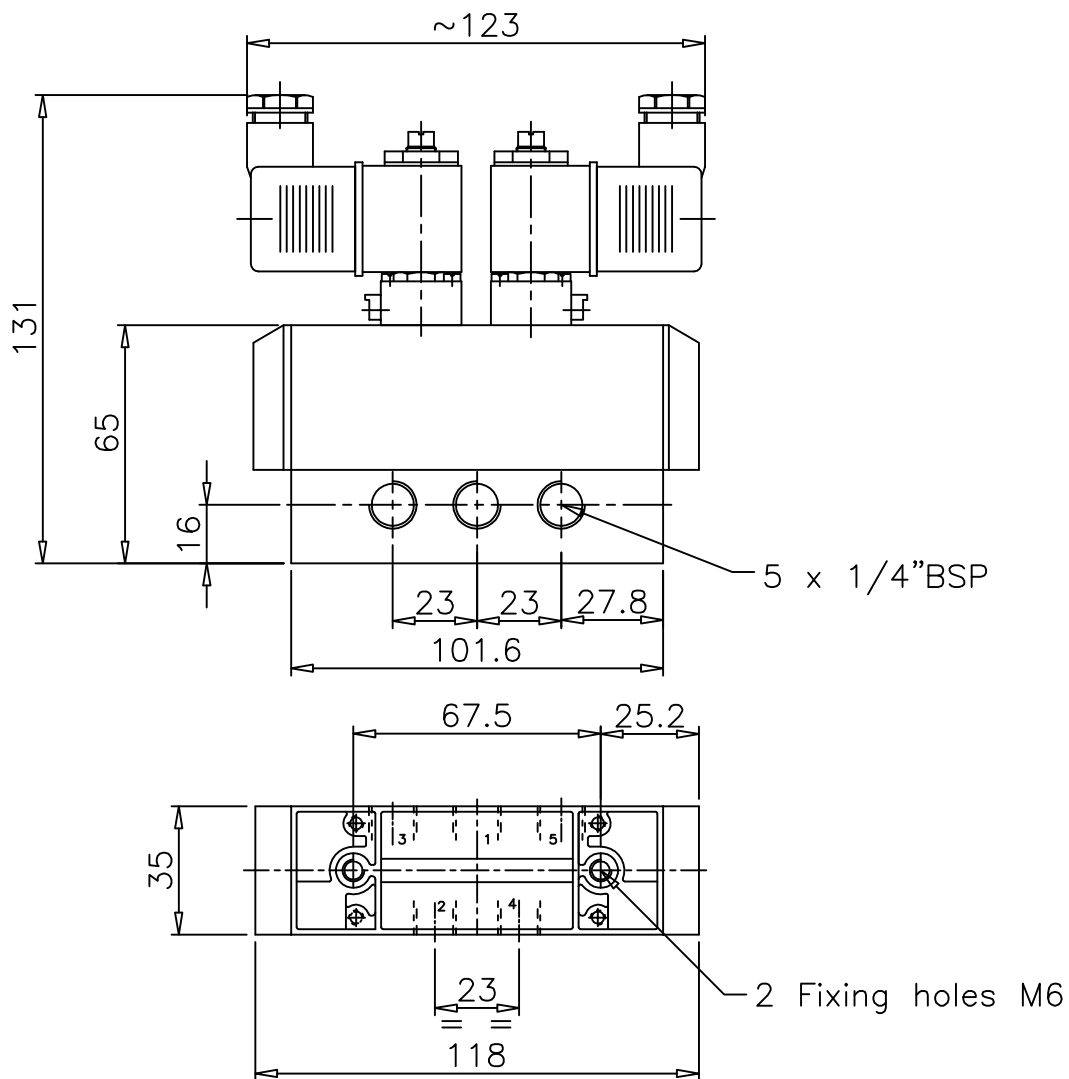
ZM/1762/6123

Type : 5/3 Fully sealed mid-position
 Port Size : 1/4" BSP
 Operating Pressure : 2.7-10 bar
 Operating Temperature : +5°C to +50°C



MATERIAL OF CONSTRUCTION

Body : Aluminium
 Seals : Nitrile



ALL DIMENSIONS ARE IN mm