

3/2 Heavy duty poppet valve

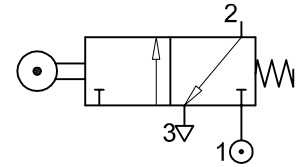
Roller operated, spring return

Normally closed

ZNCN/1340/8

Features:

- Heavy Duty & Corrosion resistant construction
- Dust proof
- Integral alternative ports



Technical Data:

Medium : Compressed air, filtered, lubricated & non lubricate

Port Size : G1/4

Mounting : Through holes in valve body

Operating Pressure : 0.7 – 10 bar

Operating Temp. : +5 °C to +75 °C

Flow (Cv) : 1.29

Material:

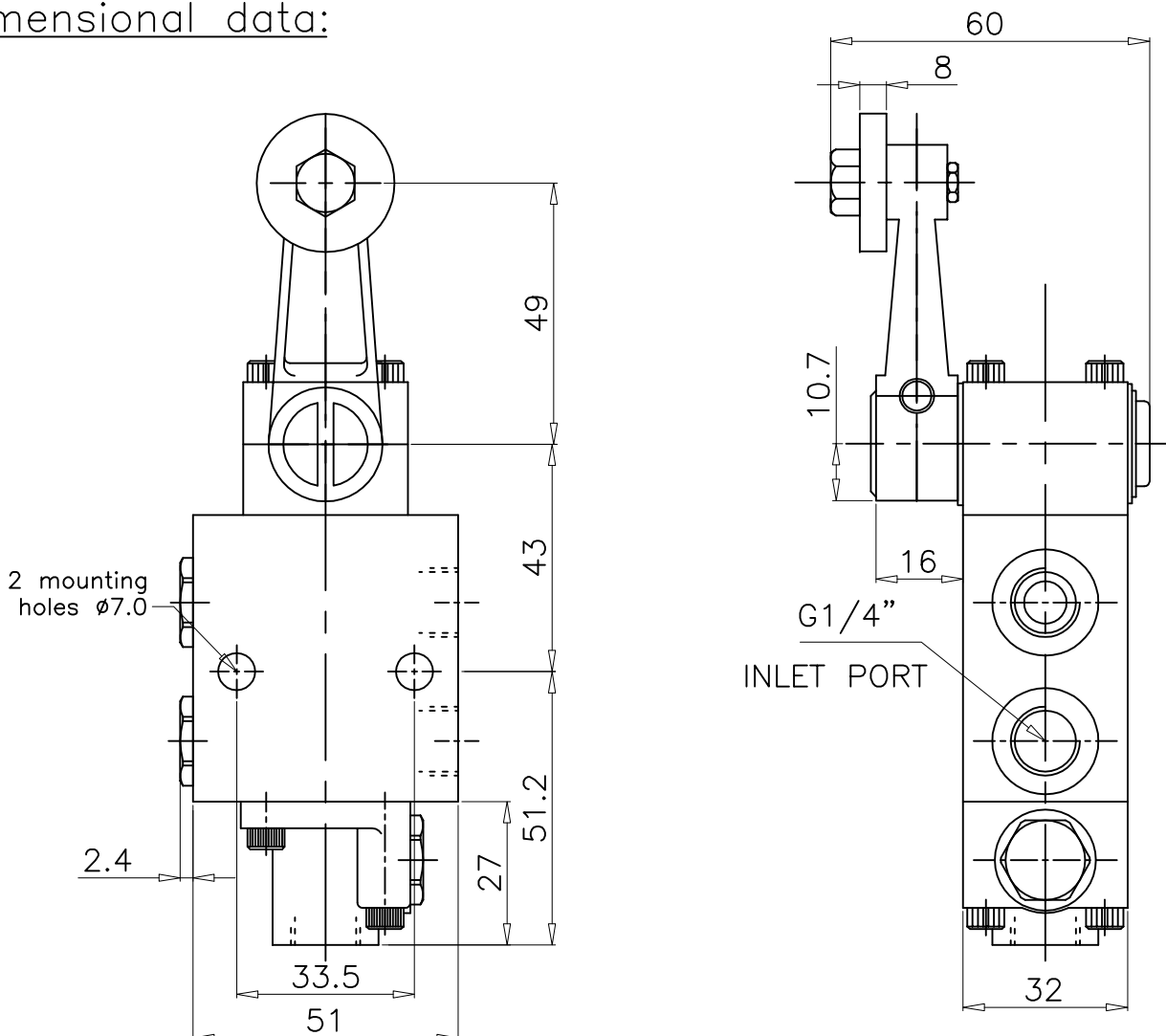
Body, Poppet, : Brass

Top & B.cover : Top & B.cover

Plunger : Stainless steel

Seals : Nitrile

Dimensional data:



ALL DIMENSIONS ARE IN mm