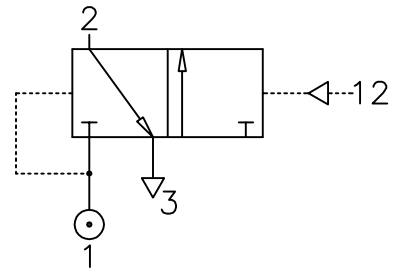


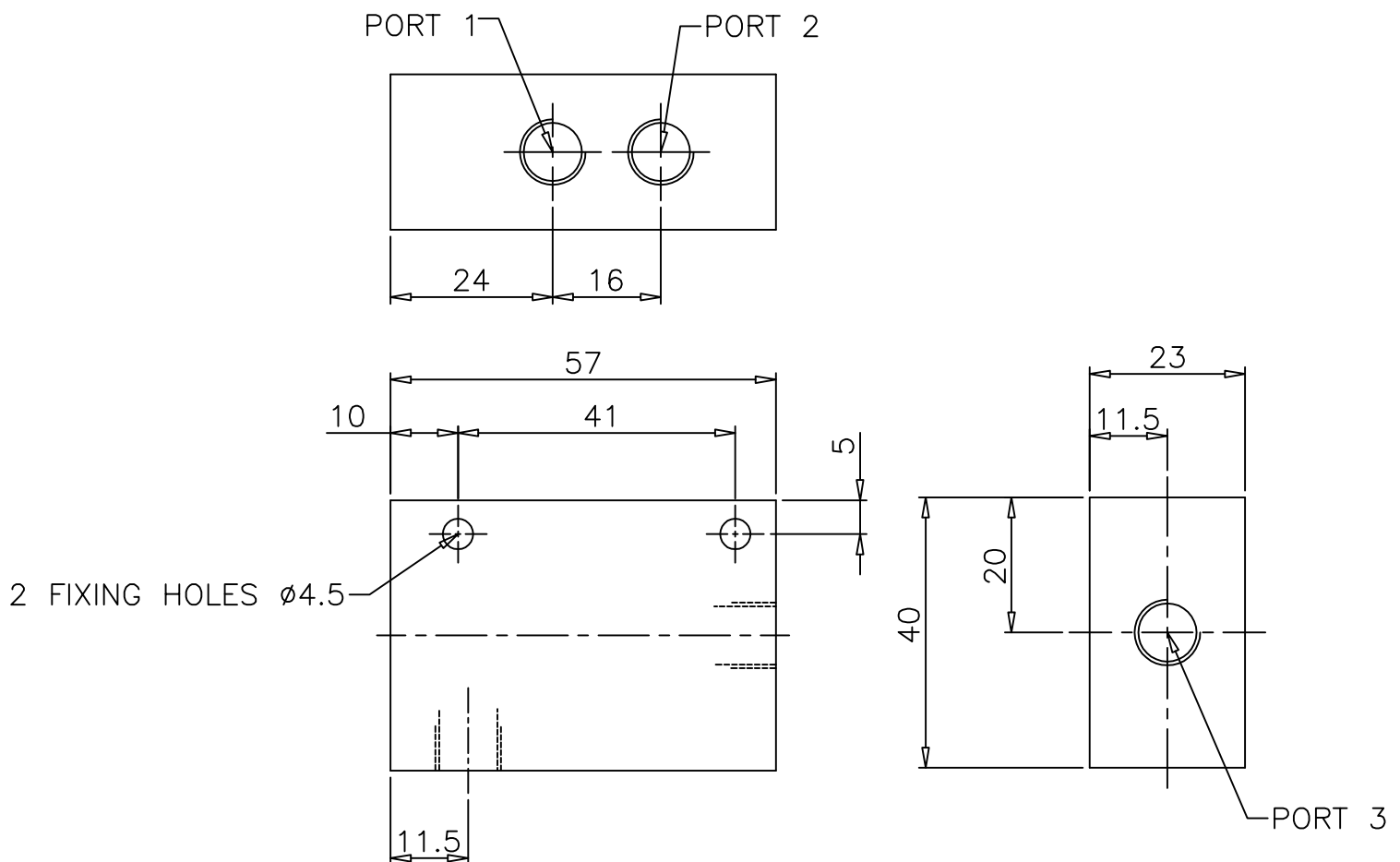
PRESSURE SWITCH

ZNCN/151

Port Size : 1/8" BSP
Min Pilot Pressure : Approx. 50% of supply pressure
Operating Temp. : 0 °C to +80 ° C
Operating Pr. : 2 - 7 bar



An extremely compact unit, the ZNCN/511 pressure switch fires and connects inlet to outlet when the air pressure applied to the signal port reaches a value of one-half of that connected to the 'inlet' port. The switch is widely used in delay circuit, where a delay is occasioned by the time taken to fill a reservoir, through a flow regulator. The consultant air supply to the inlet port should be derived from the same source responsible for supplying the signal port. This will ensure proportional action of the valve.



ALL DIMENSIONS ARE IN mm

NUCON ZANDER PRIVATE LIMITED
88, C.I.E, BALANAGAR,
HYDERABAD - 500 037

DRAWN	SREENIVAS.M	27.08.2002
CHECKED		
APPROVED		