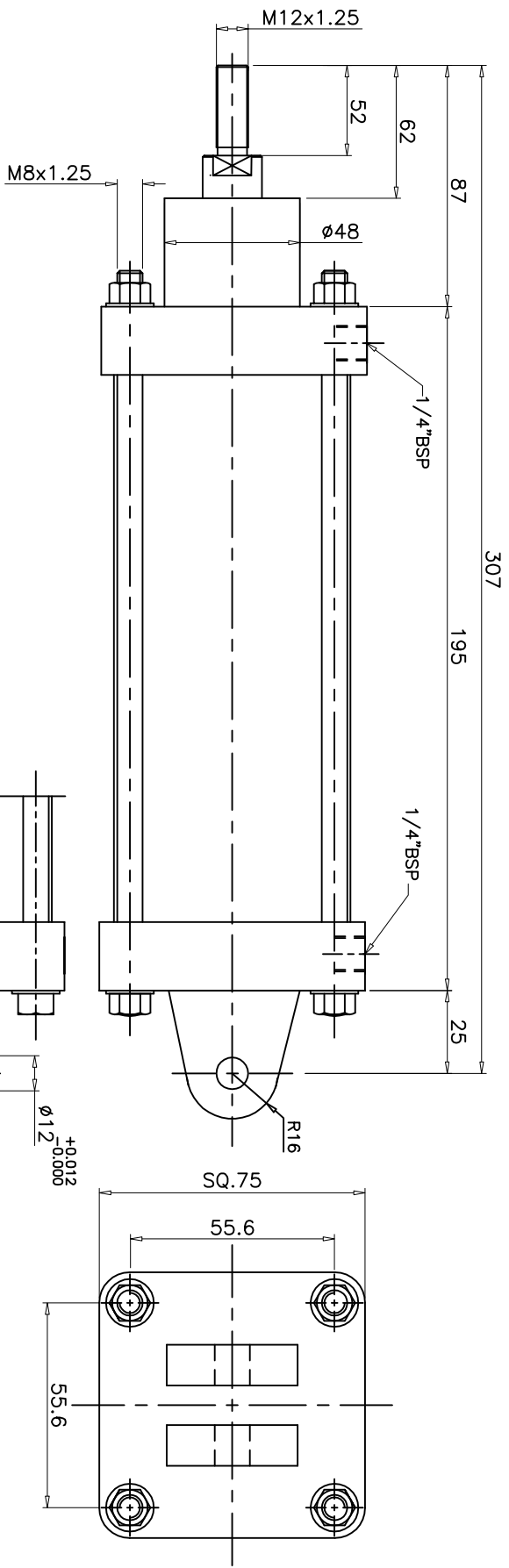
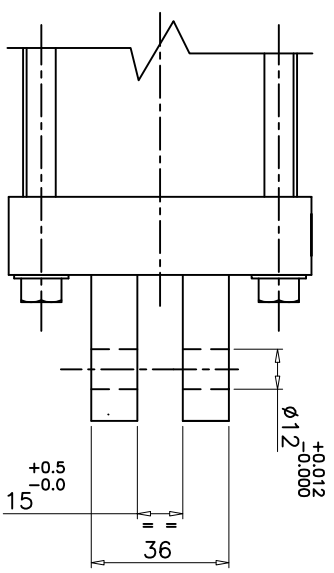


ALL DIMENSIONS ARE IN mm  
DO NOT SCALE THE DRAWING



**TECHNICAL DATA**

- 1. CYLINDER TYPE : DOUBLE ACTING FRONT END CUSHIONED
- 2. BORE DIA : 2.5"
- 3. PISTON ROD DIA : 25.4 mm
- 4. STROKE : 102 mm
- 5. OPERATING PRESSURE : 5-7kg/cm<sup>2</sup> (g)
- 6. TEST PRESSURE : 10.5kg/cm<sup>2</sup> (g)
- 7. OPERATING TEMP. MAX. : + 80°C
- 8. MOUNTINGS : REAR PIVOT MTG. STYLE-D (INTEGRAL)



REMOVE BURRS AND SHARP CORNERS

**NUCON INDUSTRIES PRIVATE LIMITED**

ASSEMBLY:	63mm BORE 102mm STROKE CAST IRON NON-CUSHIONED CYLINDER
SCALE: NTS	TITLE: DATA SHEET
DRAWN	D.SATISH
CHECKED	
APPROVED	
DRG.No.	DATA.ZRM/41015
SHEET	OF