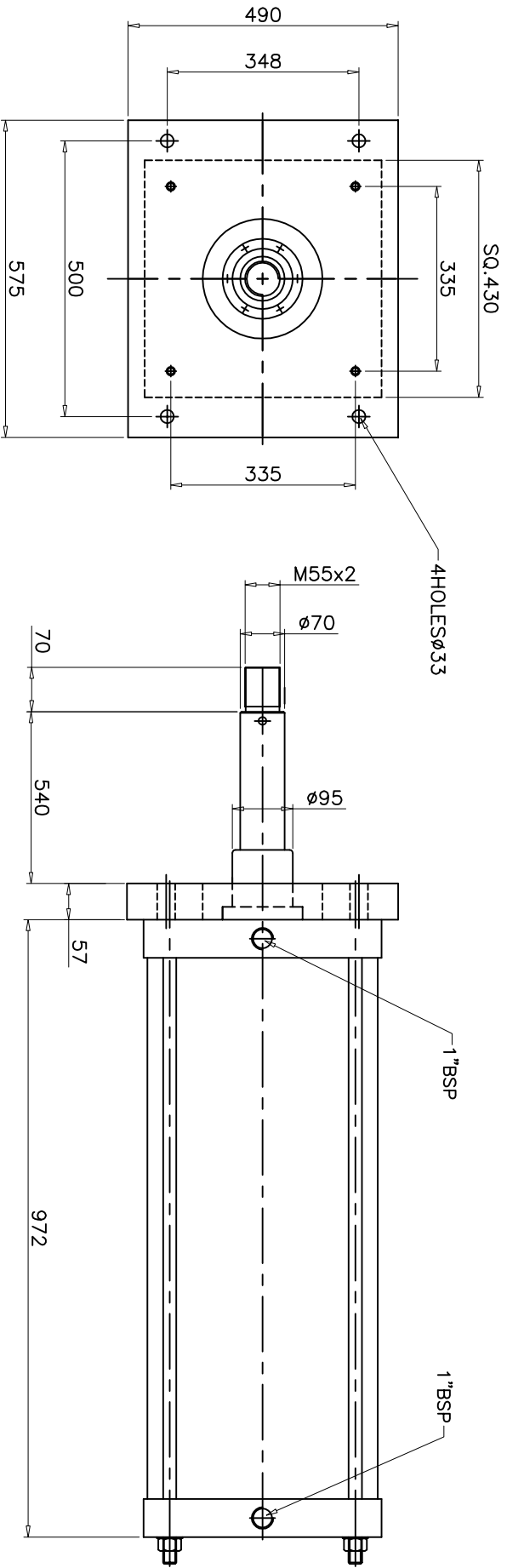


ALL DIMENSIONS ARE IN mm  
DO NOT SCALE THE DRAWING



**TECHNICAL DATA**

- 1. CYLINDER TYPE : DOUBLE ACTING NON CUSHIONED
- 2. CYL. BORE DIA : 16" (406.4mm)
- 3. STROKE : 770
- 4. PISTON ROD DIA : 70
- 5. WORKING PRESSURE : 4 - 5 bar
- 6. DESIGN PRESSURE : 10 bar
- 7. OPERATING TEMP.MAX. : +80 °C
- 8.MOUNTING : FRONT FLANGE

REMOVE BURRS AND SHARP CORNERS

**NUCON INDUSTRIES PRIVATE LIMITED**

ASSEMBLY: 16" BORE 770mm STROKE CAST IRON NON-CUSHIONED CYLINDER

SCALE: NTS TITLE: DATA SHEET



DRAWN	D.SATISH	28.09.2006
CHECKED		
APPROVED		
DRG.No.	DATA.ZRM/41020	
SHEET	OF	