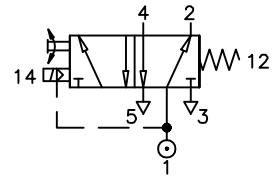


# SOLENOID OPERATED , SPRING RETURN

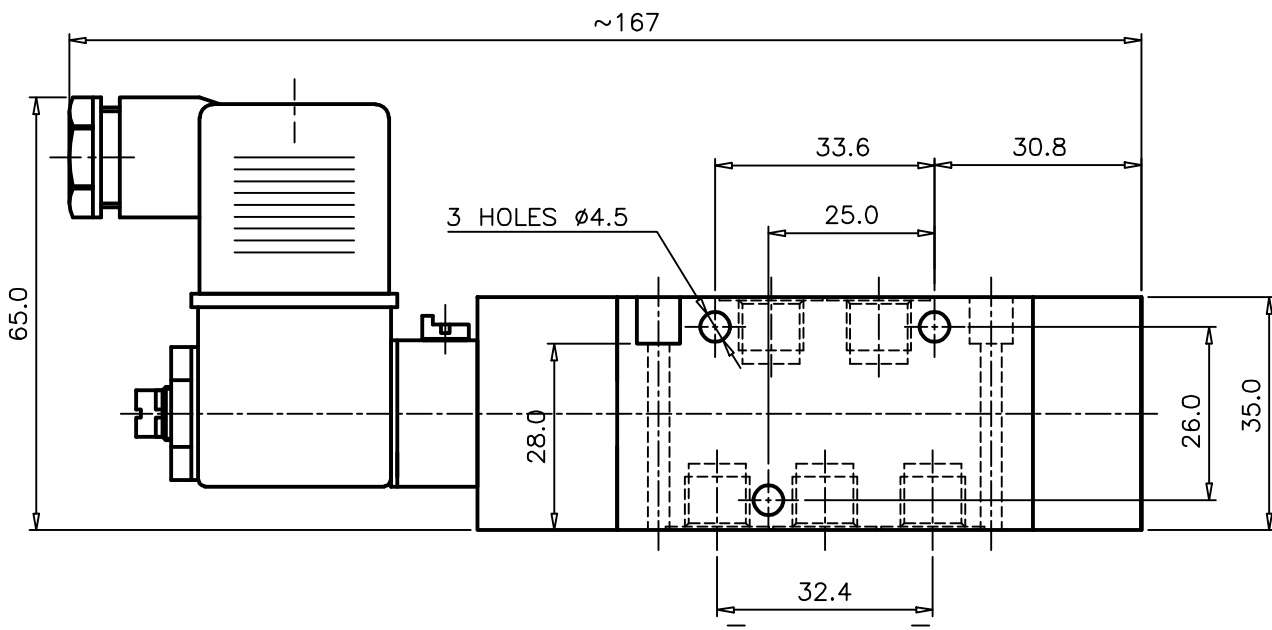
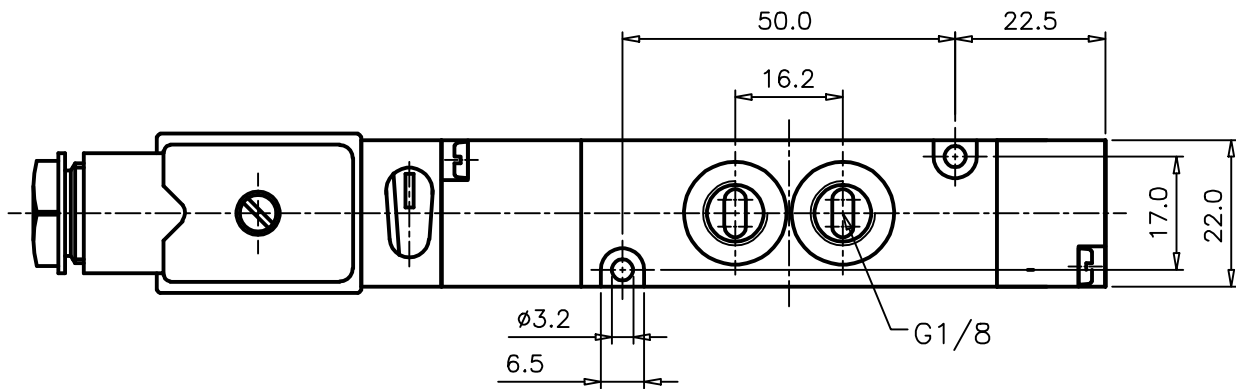
## ZV60A513A-AX\*\*\*

Type : 5/2 INLINE Valve  
 Solenoid operated  
 Port Size : G 1/8  
 Operating Pressure : 2-10 bar  
 Operating Temperature : -10°C to +50°C



### ELECTRICAL

\* Coil Voltage : 220-240 VAC ; 50-60Hz (Code : 137)  
 : 110-120 VAC ; 50-60Hz (Code : 131)  
 : 24 VDC (Code : 10)  
 Insulation : Class 'H'  
 Protection Class : IP 65  
 Terminal Box : 3 Pin plug to IP 65  
 Response Time : On 10 ms , Off 10 ms



ALL DIMENSIONS ARE IN mm

NUCON INDUSTRIES PRIVATE LIMITED  
 88 , C.I.E , BALANAGAR ,  
 HYDERABAD - 500 037

DRAWN	T.Prabhakar	16.02.2008
CHECKED		
APPROVED		