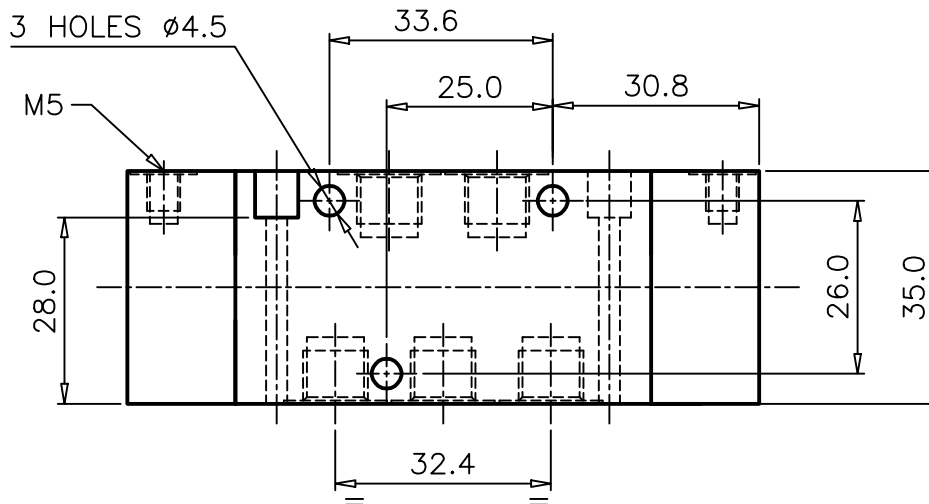
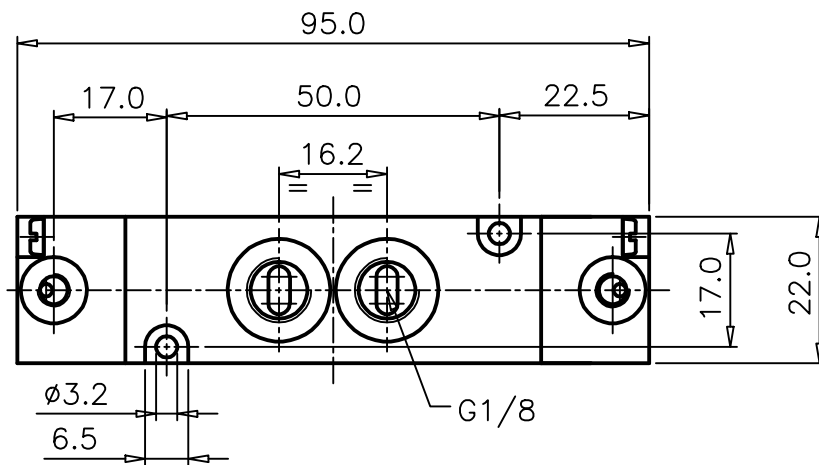
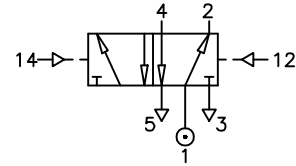


DOUBLE PILOT ACTAATED, SET RESET

ZV60A5DDA-X5020

- Type : 5/2 INLINE Valve
- Pressure actuated
- Port Size : G 1/8
- Operating Pressure : 0-10 bar
- Operating Temperature : -10°C to +70°C
- Pilot Pressure : 1.5-10 bar



ALL DIMENSIONS ARE IN mm

DRAWN	T.Prabhakar	16.02.2008
CHECKED		
APPROVED		