

# SOLENOID OPERATED , SPRING RETURN

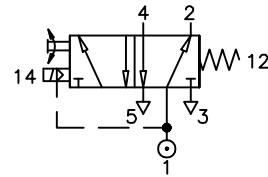
## ZV61B513A-AX\*\*\*

Type : 5/2 INLINE Valve  
Solenoid actuated

Port Size : G 1/4

Operating Pressure : 2-10 bar

Operating Temperature : -10°C to +50°C



### ELECTRICAL

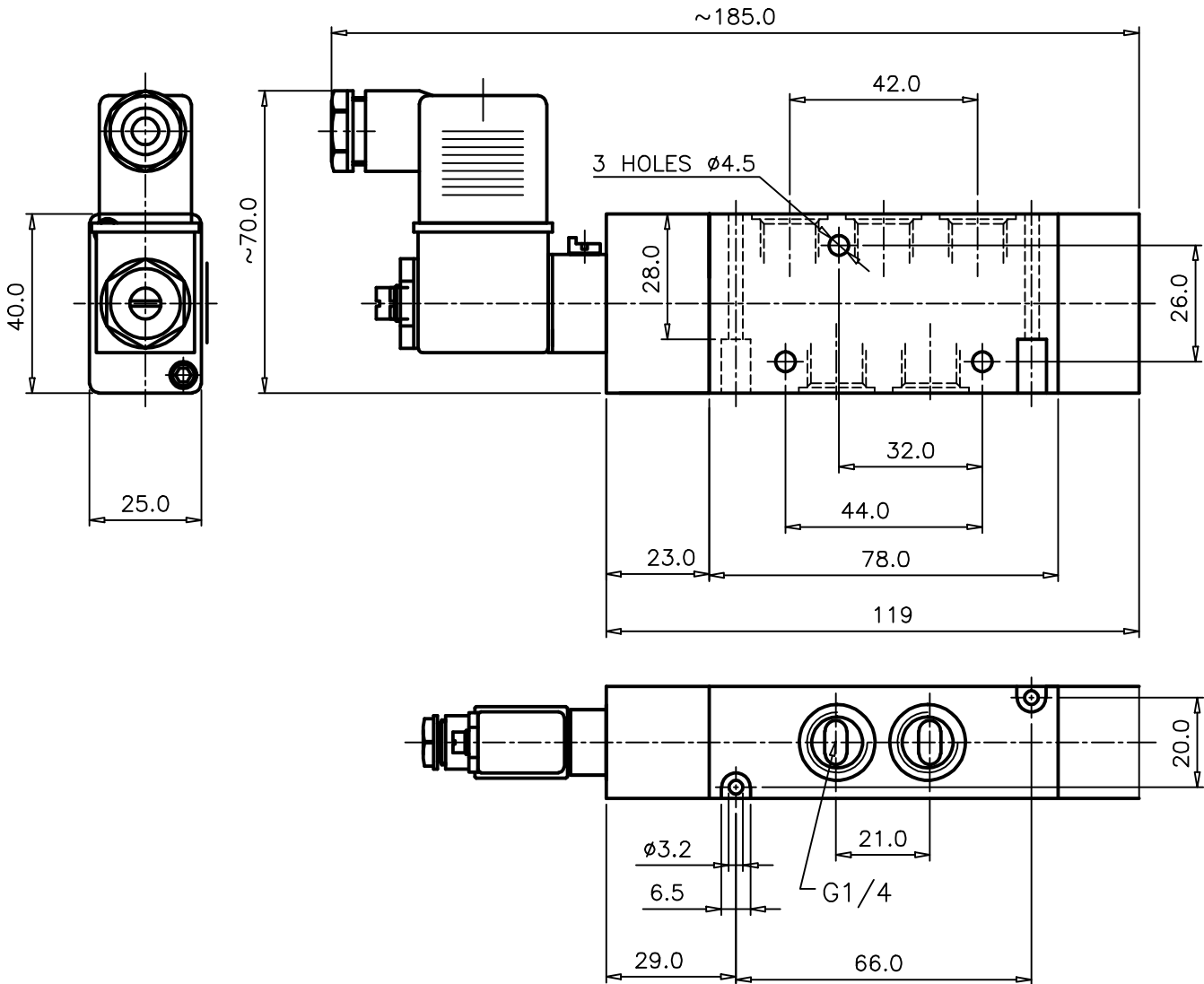
\* Coil Voltage : 220-240 VAC ; 50-60Hz (Code : 137)  
: 110-120 VAC ; 50-60Hz (Code : 131)  
: 24 VDC (Code : 10)

Insulation : Class 'H'

Protection Class : IP 65

Terminal Box : 3 Pin plug to IP 65

Response Time : On 10 ms , Off 10 ms



ALL DIMENSIONS ARE IN mm