

# Roller actuated, Pressure Reset

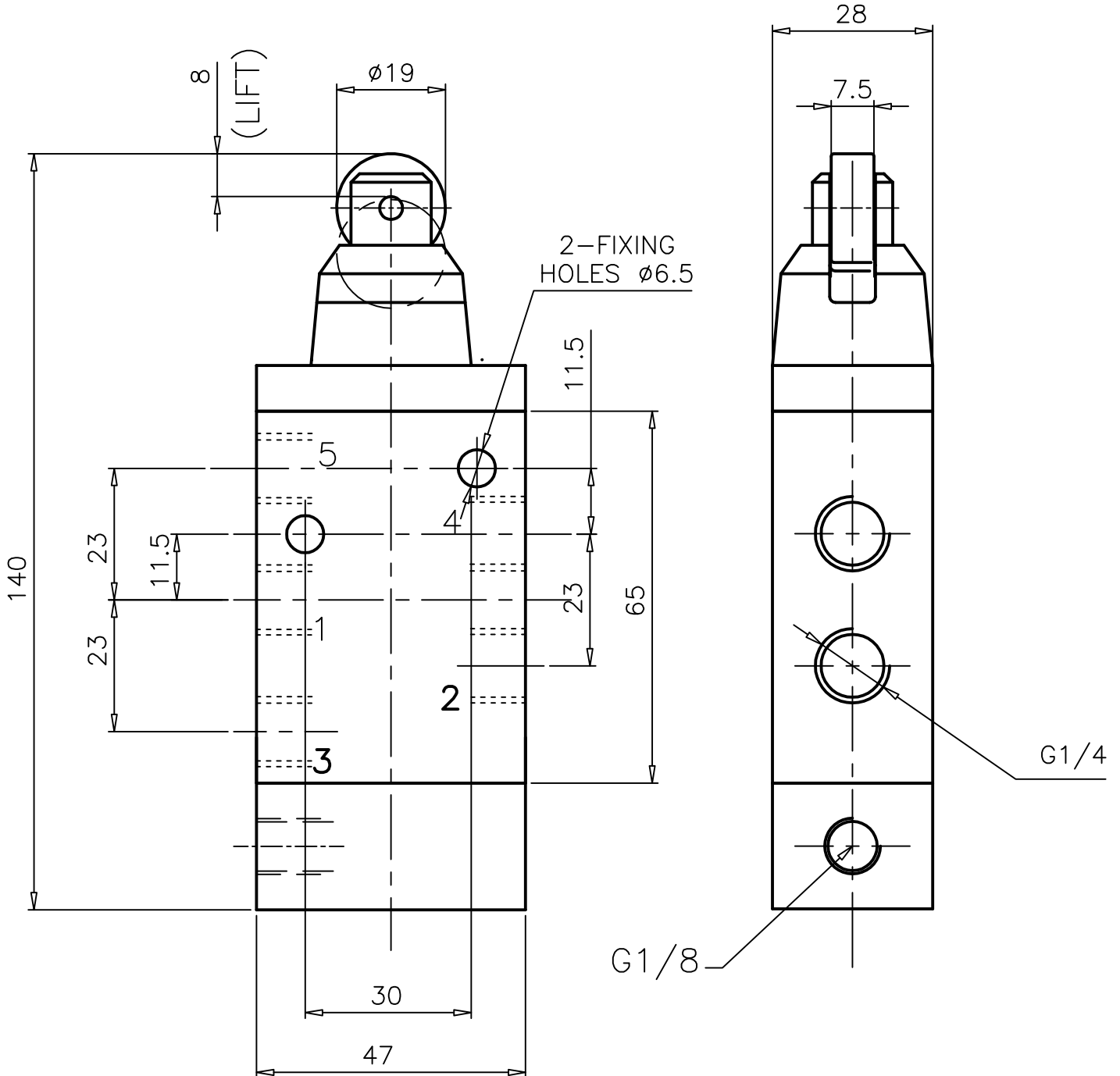
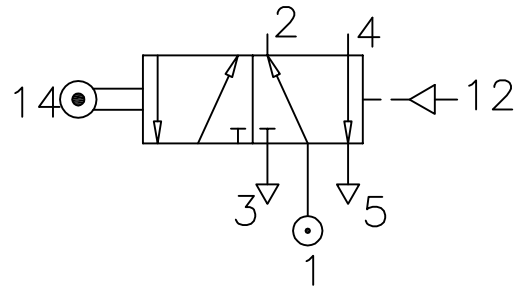
# ZX3 0649 02

Type : 5/2 Spool valve  
 Mechanically actuated

Port Size : G 1/4

Operating Pressure : 2-10 bar

Operating Temperature : +5°C to +70°C



ALL DIMENSIONS ARE IN mm

NUCON INDUSTRIES PRIVATE LIMITED  
 88 , C.I.E , BALANAGAR ,  
 HYDERABAD - 500 037

DRAWN	SREENIVAS.M	09.05.2005
CHECKED		
APPROVED		