

Roller lever actuated, Pressure reset

ZX3 0664 02

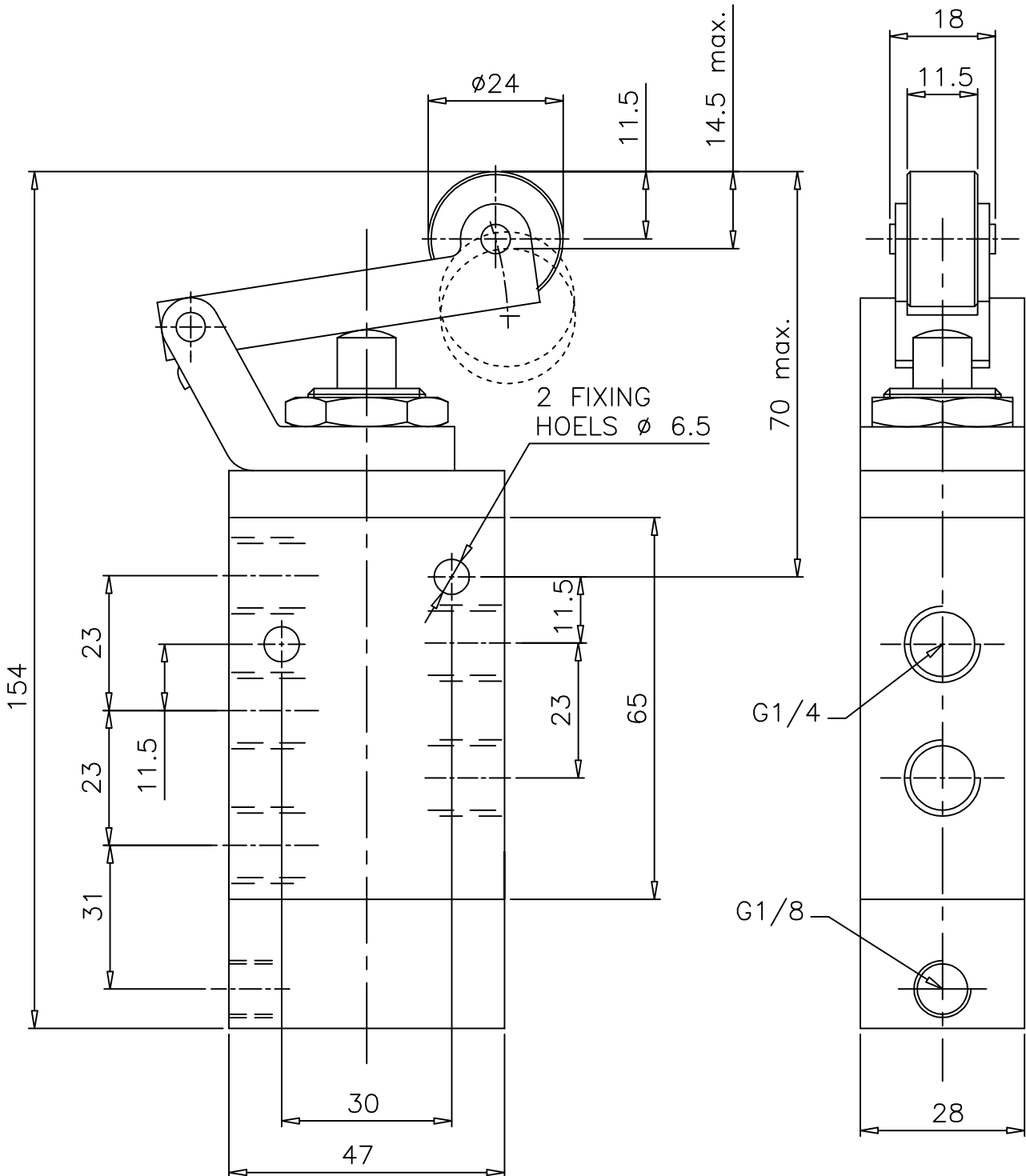
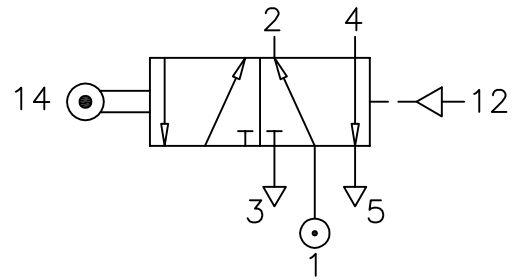
Type : 5/2 Spool Valve
Mechanically actuated

Port Size : G 1/4

Operating Pressure : 2-10 bar

Operating Temperature : +5°C to +70°C

Operating Force : 9 N



ALL DIMENSIONS ARE IN mm

NUCON INDUSTRIES PRIVATE LIMITED
88 , C.I.E , BALANAGAR ,
HYDERABAD - 500 037

DRAWN	SREENIVAS.M	16.04.2005
CHECKED		
APPROVED		