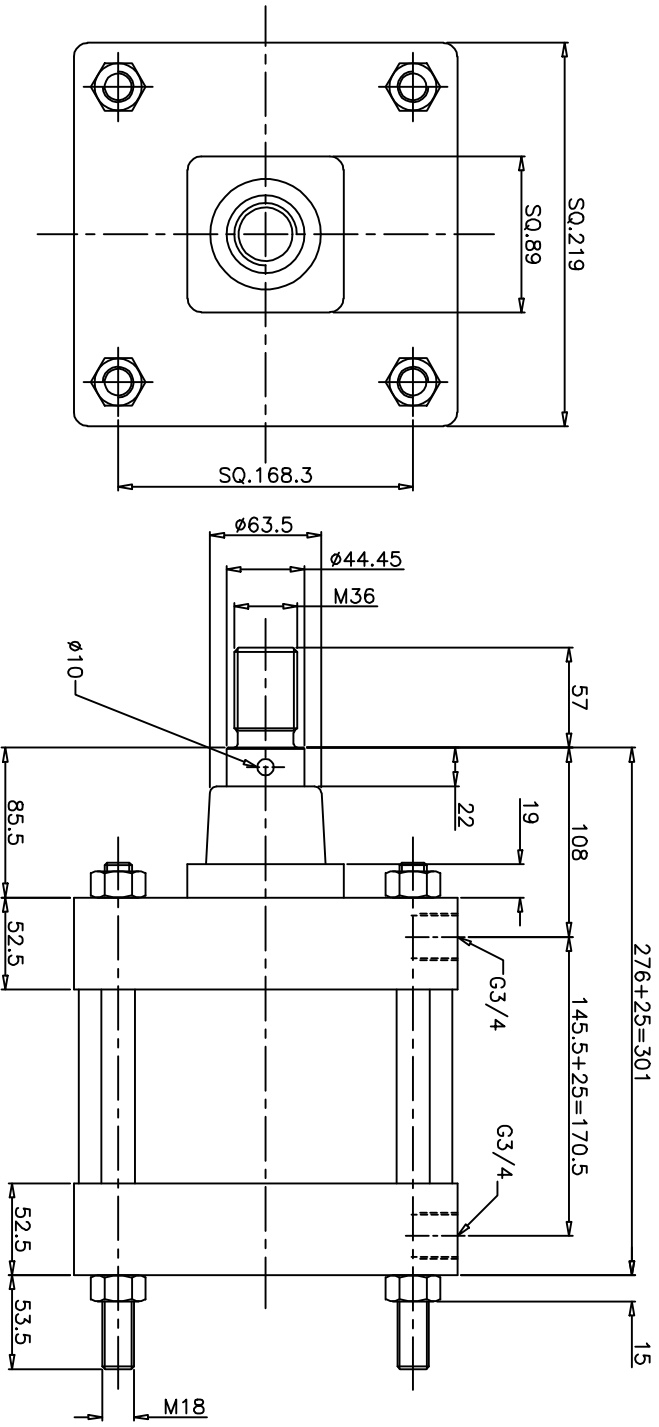


REVISIONS

SCHEDULES:

ALL DIMENSIONS ARE IN mm
DO NOT SCALE THE DRAWING

DRG.No.
ZM/980/25



TECHNICAL DATA

- 1. CYLINDER TYPE : DOUBLE ACTING STANDARD CYLINDER
- 2. BORE DIA : 8"
- 3. PISTON ROD DIA : 44.45 (1 3/4")
- 4. STROKE : 25
- 5. OPERATING PRESSURE : 2 to 10 bar
- 6. OPERATING TEMP.MAX. : + 80°C

MATERIAL OF CONSTRUCTION

- 1. PISTON & END COVERS : DIE CAST ALUMINIUM ALLOY
- 2. BARREL : HARD ANODISED ALUMINIUM ALLOY
- 3. PISTON ROD : EN8 WITH HARD CHROME PLATED
- 4. O-RING & SEALS : NITRILE RUBBER

NUCON INDUSTRIES PRIVATE LIMITED

ASSEMBLY:	8" BORE 25mm STROKE STANDARD CYLINDER
SCALE: 1:2	TITLE: DATA SHEET
DRW.N:	KVMAR
CHECKED:	128.11.2008
APPROVED:	
DRG.No.	ZM/980/25
SHEET	OF