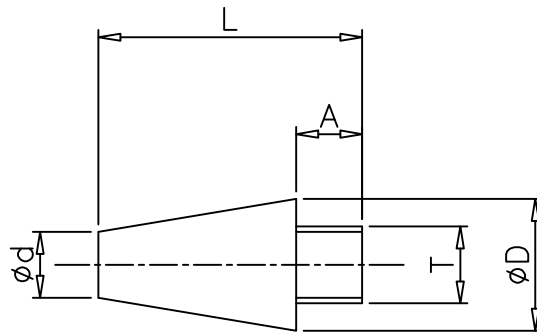


EXHUAUST SILENCER

Port Sizes : 1/8" BSP to 1" BSP
 Operating Pressure : 10 bar
 Operating Temperature : 0°C +80°C
 MATERIAL : SINTERED BRONZE



TYPE	T	ϕD	ϕd	A	L
ZN/SB1	1/8"BSP	10.0	7.5	6.0	24.0
ZN/SB2	1/4"BSP	13.5	10.0	6.5	27.0
ZN/SB3	3/8"BSP	19.8	15.0	11.5	43.0
ZN/SB4	1/2"BSP	23.5	17.0	10.5	50.5
ZN/SB6	3/4"BSP	29.5	20.0	12.0	64.0
ZN/SB8	1" BSP	38.0	30.0	15.5	64.0

ALL DIMENSIONS ARE IN mm