

3/2 AIR RESORVOIRS

Standard Operating Pressure

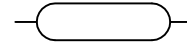
Port Size : See Table

Bore dia : 63 & 100mm

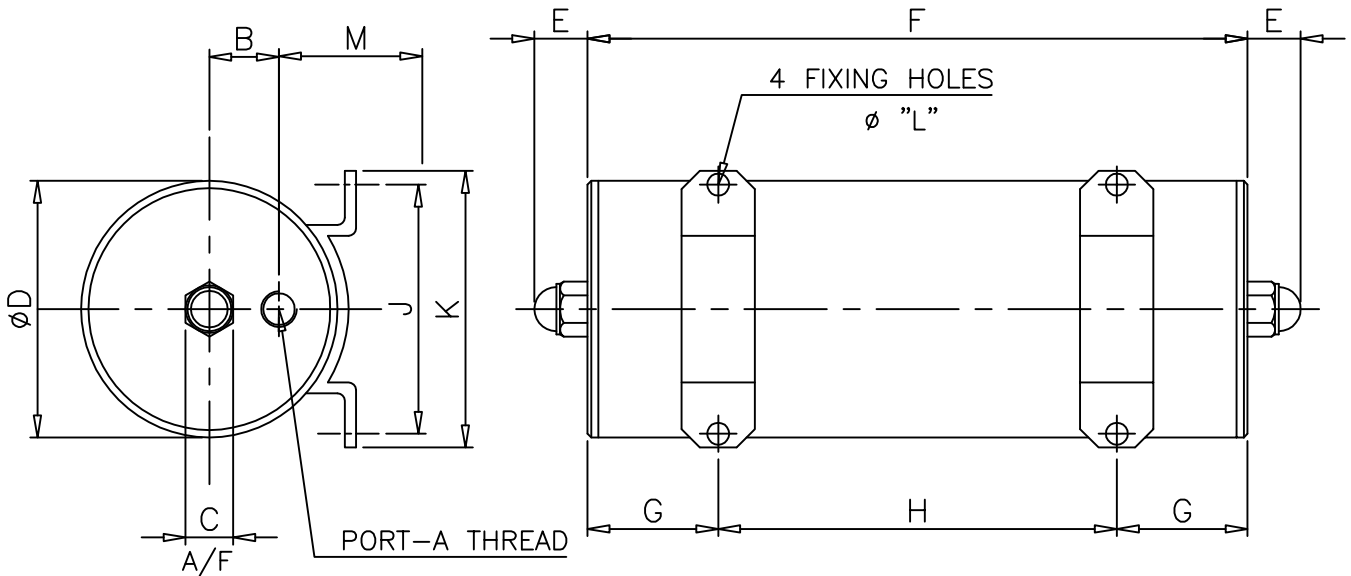
Op.Pressure : 0-10 bar

Op.Temp. : 0 to +80 deg C

ZNCN/163 , ZNCN/164



TYPE	BORE SIZE	CAPACITY dm ³	MAXIMUM DELAY IN Sec.
ZNCN/163/15	2 1/2"	0.15	18
ZNCN/163/50	2 1/2"	0.50	60
ZNCN/163/100	2 1/2"	1.00	120
ZNCN/164/200	4"	2.00	240



TYPE	A	B	C	D	E	F	G	H	J	K	L	M
ZNCN/163/15	1/8"BSP	19	13	70	14.5	66.2	33.1	-	68.0	75.5	7.1	40
ZNCN/163/50	1/8"BSP	19	16	70	14.5	176.2	35.7	105.3	68.0	75.5	7.1	40
ZNCN/163/100	1/8"BSP	19	13	70	14.5	334.7	35.7	263.3	68.0	75.5	7.1	40
ZNCN/164/200	1/4"BSP	27	19	108	22	274	54.0	166.0	98.5	111.0	8.7	60

ALL DIMENSIONS ARE IN mm